

# LOT GRADING PLAN OF PROPOSED LOTS A, B AND C, DISTRICT LOT 9261, CARIBOO DISTRICT, PLAN EPP11216.

BCGS 93G.087

THIS PLAN LIES WITHIN INTEGRATED SURVEY  
AREA No. 39, PRINCE GEORGE, NAD83 (CSRS).

THE INTENDED PLOT SIZE OF THIS PLAN IS 560mm IN WIDTH BY  
432mm IN HEIGHT (C SIZE) WHEN PLOTTED AT A SCALE OF 1:500.

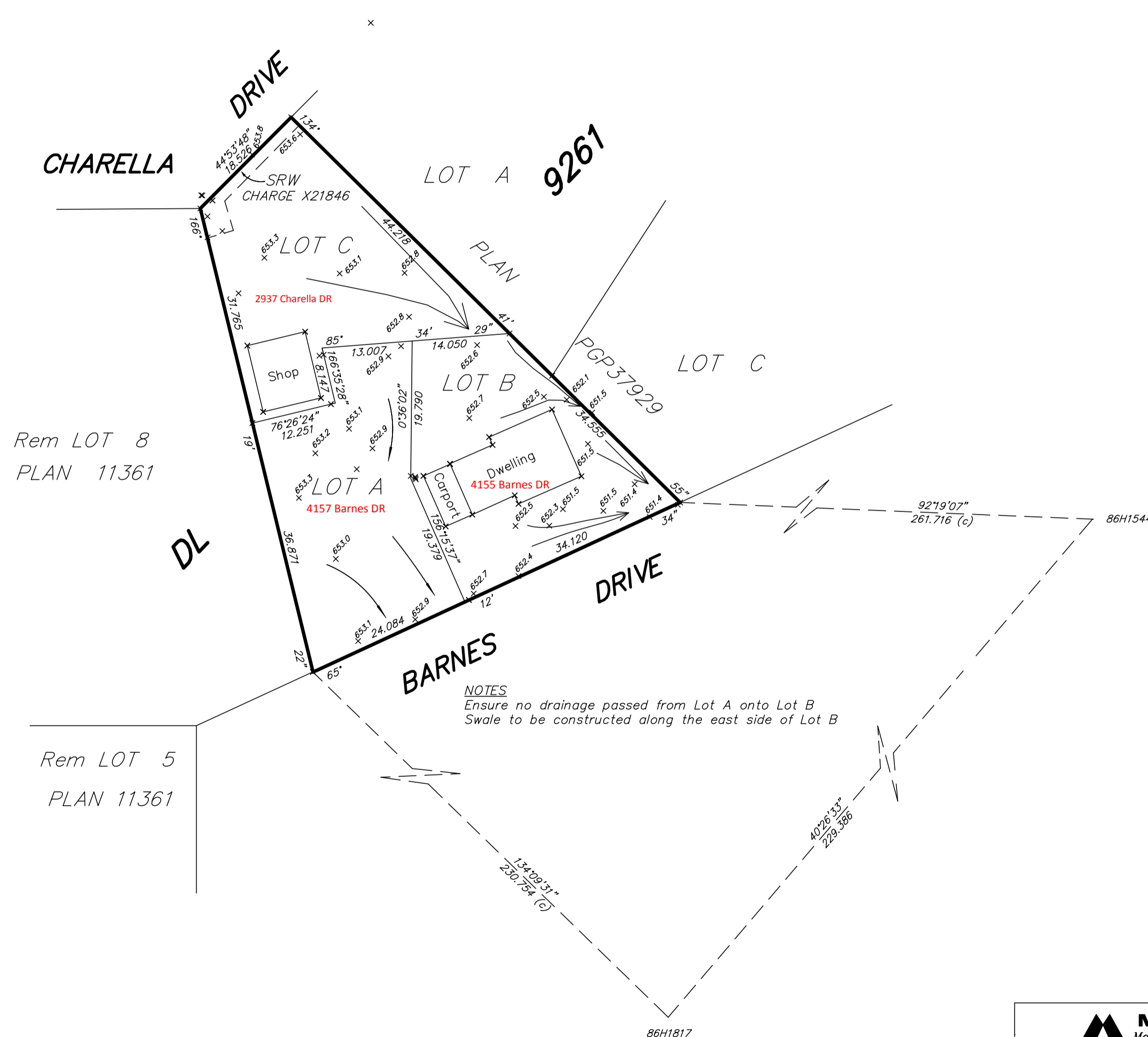


ALL DISTANCES ARE SHOWN IN METRES AND DECIMALS  
THEREOF, UNLESS OTHERWISE INDICATED.

**LEGEND**

GRID BEARINGS ARE DERIVED FROM OBSERVATIONS  
BETWEEN CONTROL MONUMENTS 86H1817 AND 86H1544.

THIS PLAN SHOWS HORIZONTAL GROUND-LEVEL DISTANCES EXCEPT  
WHERE OTHERWISE NOTED. TO COMPUTE GRID DISTANCES, MULTIPLY  
GROUND-LEVEL DISTANCES BY COMBINED FACTOR 0.99950220.




**NOTES**  
Ensure no drainage passed from Lot A onto Lot B  
Swale to be constructed along the east side of Lot B

THIS PLAN LIES WITHIN THE JURISDICTION OF THE  
APPROVING OFFICER FOR THE CITY OF PRINCE GEORGE.

CPG FILE # SD100334

THE FIELD SURVEY REPRESENTED BY THIS PLAN  
WAS COMPLETED BY DAVID E. STORBACK, BCLS  
ON THE 8th DAY OF FEBRUARY, 2011.

THIS PLAN LIES WITHIN THE REGIONAL DISTRICT OF FRASER-FORT GEORGE.

 <b>McElhanney</b> McElhanney Associates Land Surveying Ltd. Prince George, B.C.	
Ph: (250) 561-2229 Fax: (250) 563-1941	
DL 9261	DWG - 5842 LG
CPG # SD100334	