

LOT GRADING PLAN OF LOTS A AND B, DL 2014, CARIBOO DISTRICT, PLAN EPP28431.

BCGS 93G.087

THE INTENDED PLOT SIZE OF THIS PLAN IS 280mm IN WIDTH BY 432mm IN HEIGHT (B SIZE) WHEN PLOTTED AT A SCALE OF 1:250



ALL DISTANCES ARE HORIZONTAL GROUND-LEVEL AND ARE SHOWN IN METRES AND DECIMALS THEREOF, UNLESS OTHERWISE INDICATED.

ALL DIMENSIONS TAKEN FROM PLAN EPP28431

LEGEND

X DENOTES SPOT ELEVATION

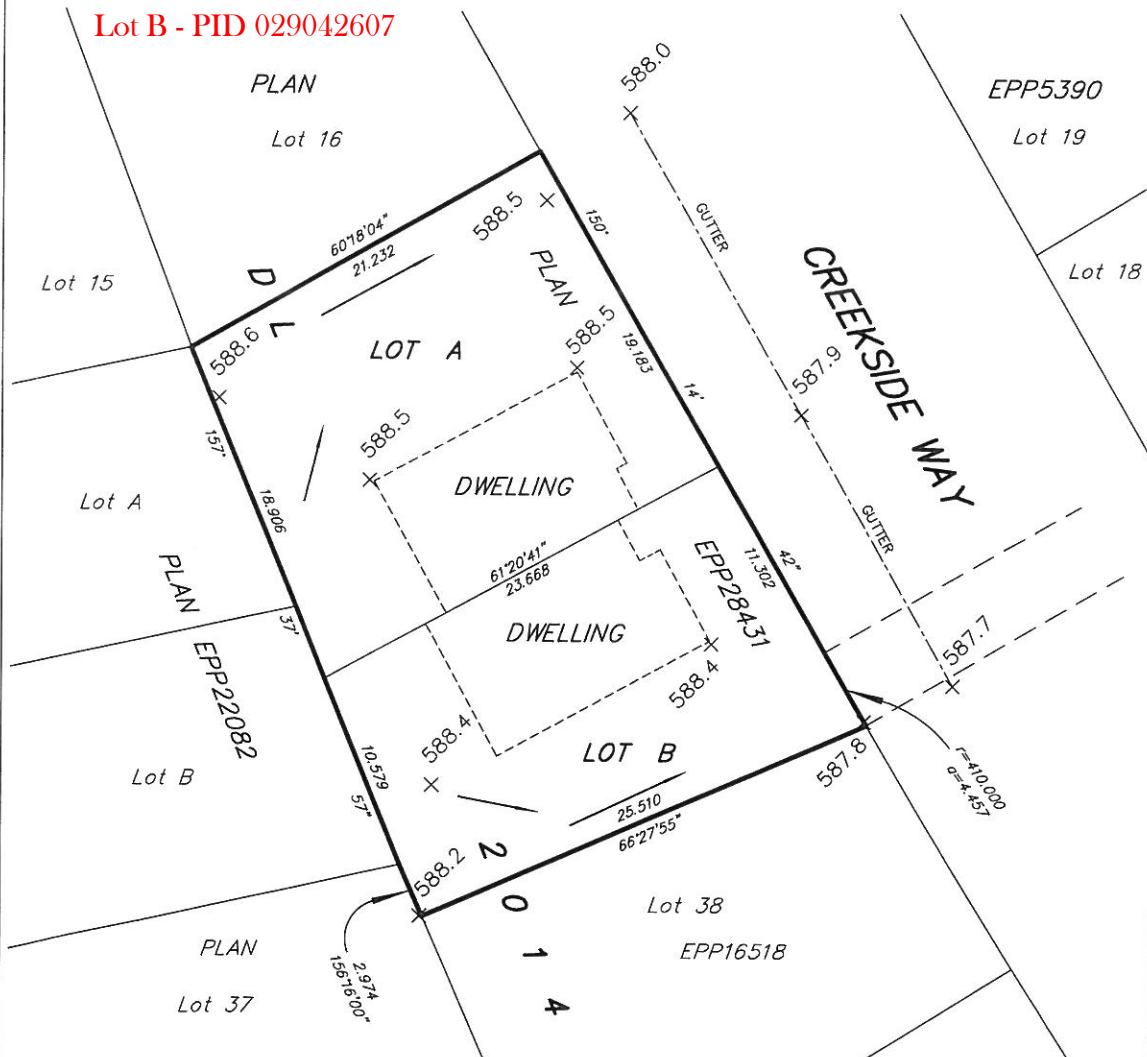
NOTE: ELEVATIONS ARE GEODETIC BASED ON TIES TO INTEGRATED MONUMENTS 86H1554 AND 86H1564.

NOTE: ARROWS INDICATE RECOMMENDED FLOW DIRECTION AND DO NOT NECESSARILY INDICATE THE FLOW AS IS ON THE DATE OF THIS SURVEY.

NOTE: FINAL LOT GRADING PLAN TO BE DETERMINED BY THE CITY OF PRINCE GEORGE.

Lot A - PID 029042593

Lot B - PID 029042607



THE FIELD SURVEY REPRESENTED BY THIS PLAN WAS COMPLETED ON FEBRUARY 18th, 2013.

THIS PLAN LIES WITHIN THE REGIONAL DISTRICT OF FRASER - FORT GEORGE

McElhanney
McElhanney Associates
Land Surveying Ltd.

Prince George, B.C.

E-mail: pgmals@mcElhanney.com

Ph: (250) 561-2229 Fax: (250) 563-1941

DL- 2014

File No. - 5883-LG-17

CPG FILE # SD100406