

LOT GRADING PLAN OF LOTS A AND B, DISTRICT LOT 754, CARIBOO DISTRICT, PLAN EPP23493.

THE INTENDED PLOT SIZE OF THIS PLAN IS 560mm IN WIDTH BY
432mm IN HEIGHT (A SIZE) WHEN PLOTTED AT A SCALE OF 1:500

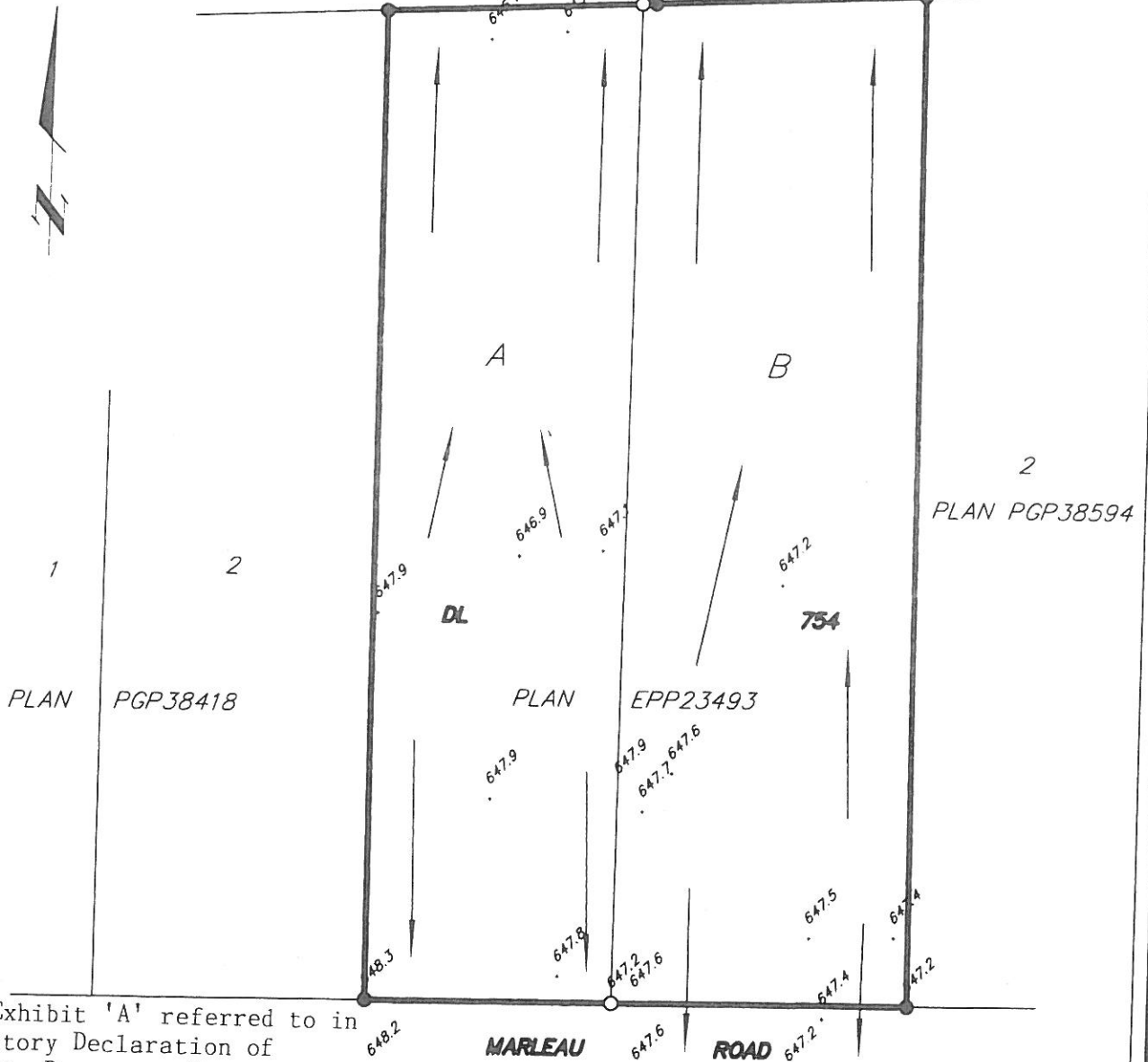


THE ELEVATIONS SHOWN ARE GEODETIC
DERIVED FROM 86H1835

REM N 1/2 OF NW 1/4 DL 754

B.C. HYDRO R/W

PLAN A-2219



This is Exhibit 'A' referred to in
the Statutory Declaration of
Gerda Maria Bressette Sworn before
me at Prince George, B.C. this
7th day of January, 2013.

Commissioner for Taking Affidavits for BC
THE FIELD SURVEY REPRESENTED BY THIS PLAN
WAS COMPLETED ON THE 20th DAY OF AUGUST, 2012.

McElhanney
McElhanney Associates
Land Surveying Ltd.
Prince George, B.C.

E-mail: pgmals@mcElhanney.com
Ph: (250) 561-2229 Fax: (250) 563-1941

DL - 754

File No. - 6041