

**LOT GRADING PLAN OF LOTS A AND B,  
DISTRICT LOT 2014, CARIBOO DISTRICT,  
PLAN EPP22082.**

BCGS 93G.087

THIS PLAN LIES WITHIN INTEGRATED SURVEY  
AREA No. 39, PRINCE GEORGE, NAD83 (CSRS)

THE INTENDED PLOT SIZE OF THIS PLAN IS 560mm IN WIDTH BY  
432mm IN HEIGHT (C SIZE) WHEN PLOTTED AT A SCALE OF 1:500

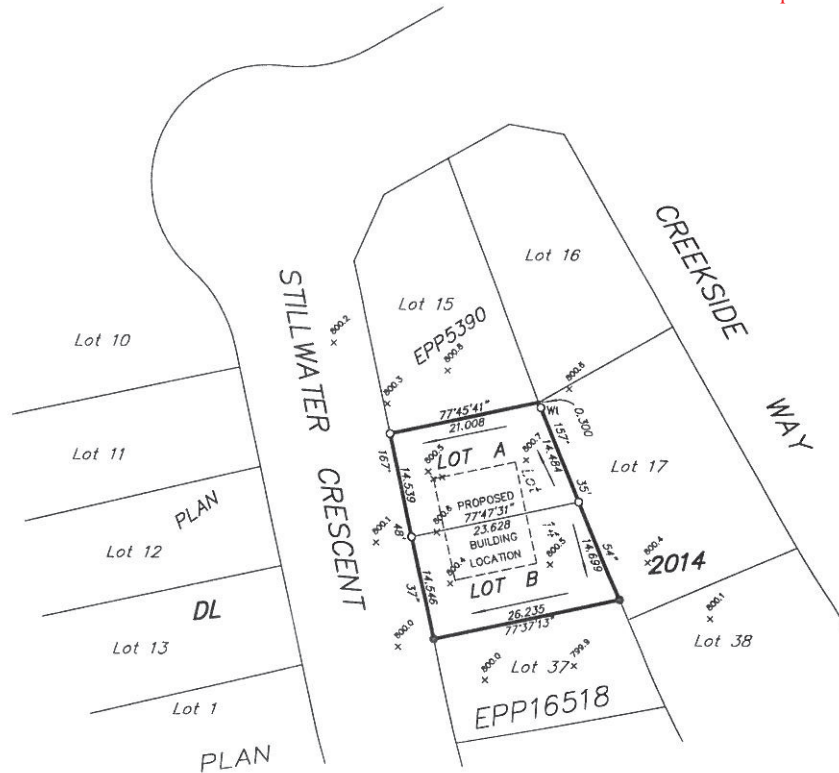
10m 0 10 20 30 40m

ALL DISTANCES ARE SHOWN IN METRES AND  
DECIMALS THEREOF, UNLESS OTHERWISE INDICATED.

**LEGEND**

- DENOTES STANDARD IRON POST FOUND
- DENOTES STANDARD IRON POST PLACED

THIS PLAN SHOWS ONE OR MORE WITNESS POSTS  
WHICH ARE NOT SET ON THE TRUE CORNER(S).



PID 028969171

Lot A - 7616 Stillwater Cres

The information contained herein is  
for internal use only. Not to be  
relied upon unless confirmed by site  
inspection and/or investigation.

SURVEY COMPLETED ON JUNE 12, 2012.

**McElhanney**  
McElhanney Associates  
Land Surveying Ltd.  
Prince George, B.C.

E-mail: [pgmals@mcelhanney.com](mailto:pgmals@mcelhanney.com)  
Ph: (250) 561-2229 Fax: (250) 563-1941

DL- 2014	File No. - 5883-14-LG
CPG File: SD100389	JULY 5, 2012

THIS PLAN LIES WITHIN THE REGIONAL DISTRICT OF FRASER - FORT GEORGE.