

LEGEND

PROPOSED SPOT ELEVATION

EXISTING SPOT ELEVATION

CONSULTANT LOGO

L&M

ENGINEERING LIMITED

1210 FOURTH AVENUE
PRINCE GEORGE, B.C.
V2L 3A4
TEL (250) 562-1977
FAX (250) 562-1967

DISCLAIMER

THE CIVIL RECORD DRAWINGS INCORPORATE CHANGES DOCUMENTED BY THE CONSULTANT THROUGH THE CONSTRUCTION PHASE, INCLUDING CHANGE ORDERS, SUPPLEMENTAL INSTRUCTIONS AND REQUESTS FOR INFORMATION. THEY DO NOT INCLUDE MARK-UPS ON SHOP DRAWINGS.

L&M ENGINEERING LIMITED DOES NOT GUARANTEE THE ACCURACY OF THE INFORMATION PROVIDED (OR NOT PROVIDED) BY THE CONTRACTOR. L&M ENGINEERING LIMITED HAS NOT VERIFIED THE ACCURACY OR COMPLETENESS OF AS-BUILT INFORMATION AND IS NOT RESPONSIBLE FOR ANY ERRORS OR OMISSIONS IN THE INFORMATION PROVIDED (OR NOT PROVIDED) BY OTHERS. AS SUCH, IF THE CLIENT OR ANY FUTURE CONSULTANT RELIES ON THIS INFORMATION, THEY DO SO AT THEIR OWN RISK.



7	RECORD DRAWING	02/09/20
6	REVISED GRADING	07/07/20
5	ADD SIDEWALK	01/06/20
4	ISSUED FOR CONSTRUCTION	18/06/18
3	REVISED DESIGN ELEV	08/05/18
2	ISSUED FOR TENDER	04/04/18
1	BUILDING PERMIT	29/01/18
#	DESCRIPTION	DATE

KELLY ROAD SECONDARY SCHOOL

SD 57
4540 HANDLEN RD
PRINCE GEORGE, BC
V2K 2J8

PROJECT #: 1387-05

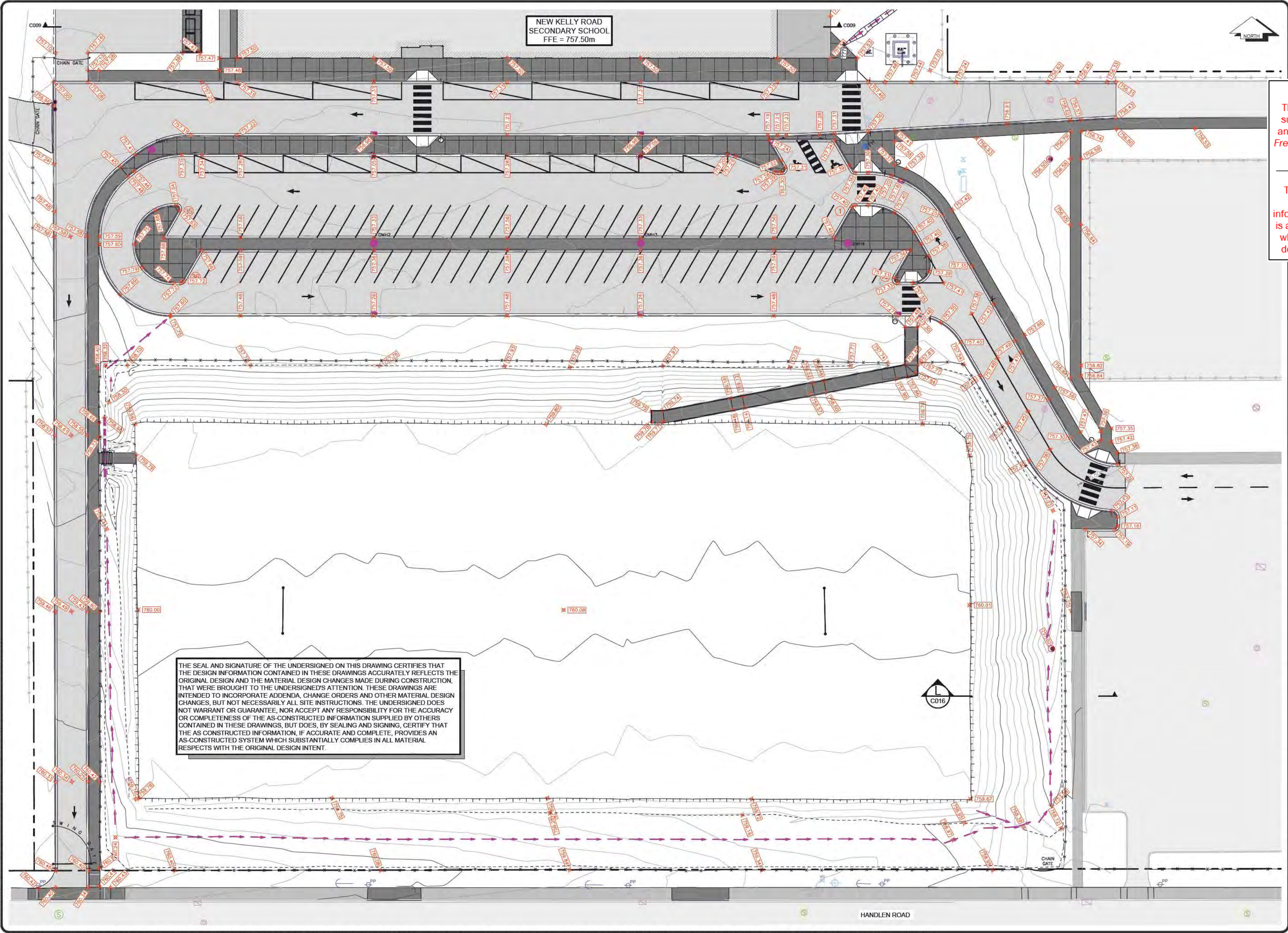
GRADING PLAN

C006

SCALE: 1:250

The City of Prince George does not represent or guarantee that the information contained in this document is accurate or reliable, and any person who relies on this information in this document does so at their own risk.

City of Prince George
This information has been provided subject to the *Federal Copyright Act* and in accordance with the *Provincial Freedom of Information and Protection of Privacy Act*



LEGEND

City of Prince George

This information has been provided subject to the *Federal Copyright Act* and in accordance with the *Provincial Freedom of Information and Protection of Privacy Act*.

The City of Prince George does not represent or guarantee that the information contained in this document is accurate or reliable, and any person who relies on this information in this document does so at their own risk.

STREET ADDRESS:
4540 HANDLEN ROAD

LEGAL DESCRIPTION:
LOT 1
PLAN 23232
DL 2424
PID: 008-579-539

5	14/6/23	RECORD DRAWING	JPA
4	13/12/21	AS PER CCN 13	JPA
3	3/2/2021	AS PER CCN 3	JPA
2	3/11/20	ISSUED FOR CONSTRUCTION	JPA
1	2/9/20	AS PER ADDENDUM No.2	JPA
0	14/8/20	ISSUED FOR TENDER	JPA
NO.	DATE (D/M/Y)	REVISION	BY

RECORD DRAWING



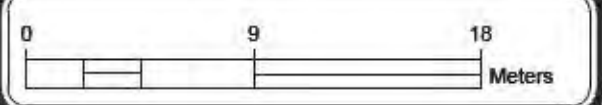
CONSULTANTS PROJECT No.:	1123-67
DRAWN:	JPA
CHECKED:	TAF
ENGINEER:	TAF
DATE:	01/06/2020
SCALE:	FULL 1:300
SCALE:	HALF 1:600

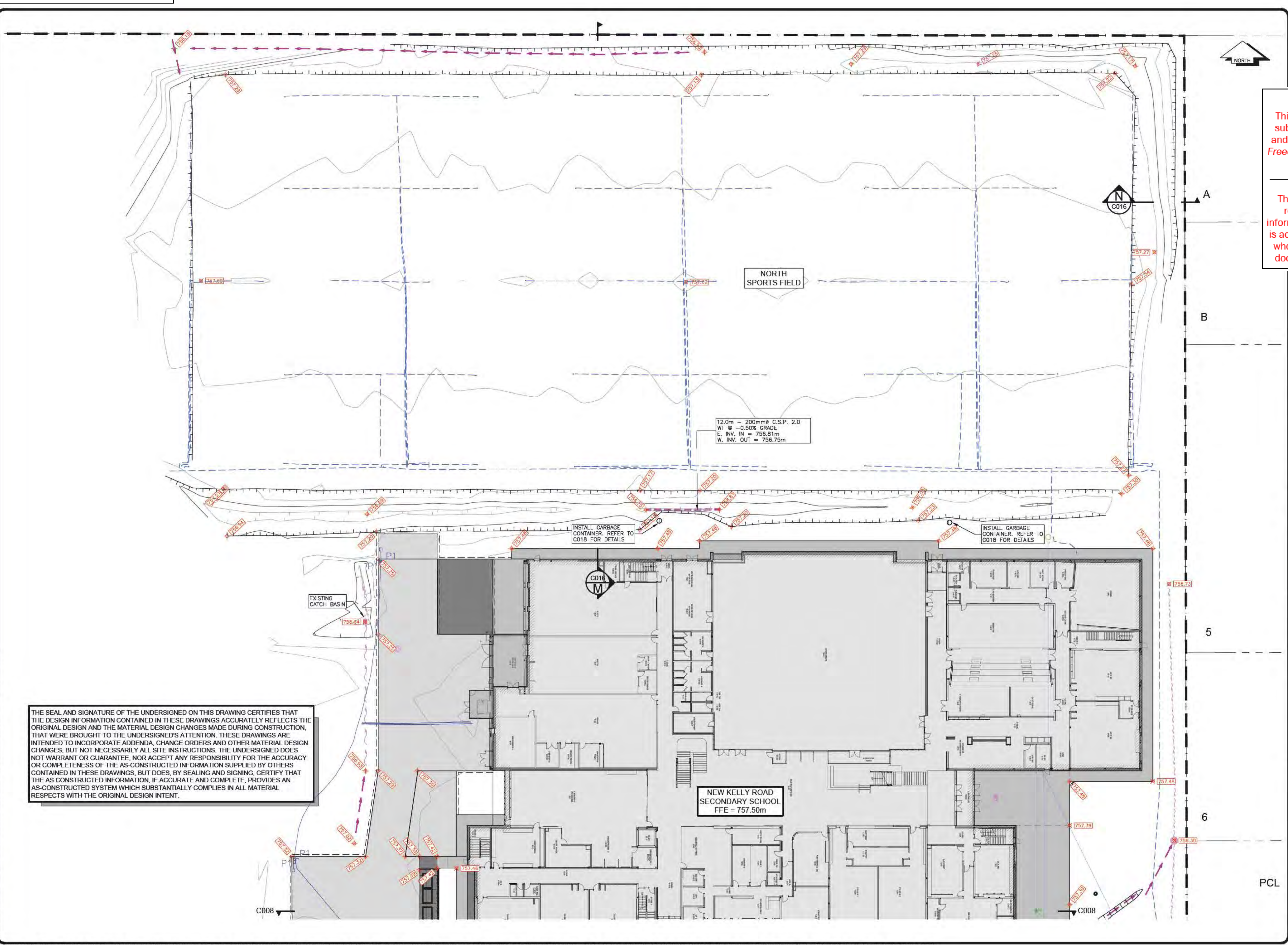


SCHOOL DISTRICT No.57
KELLY ROAD SECONDARY SCHOOL (SHAS TI)
REPLACEMENT PROJECT
PHASE 2
SCHOOL DEMO & SITE UPGRADES
GRADING PLAN - 1 of 3

DRAWING No.

C008





THE SEAL AND SIGNATURE OF THE UNDERSIGNED ON THIS DRAWING CERTIFIES THAT THE DESIGN INFORMATION CONTAINED IN THESE DRAWINGS ACCURATELY REFLECTS THE ORIGINAL DESIGN AND THE MATERIAL DESIGN CHANGES MADE DURING CONSTRUCTION, THAT WERE BROUGHT TO THE UNDERSIGNED'S ATTENTION. THESE DRAWINGS ARE INTENDED TO INCORPORATE ADDENDA, CHANGE ORDERS AND OTHER MATERIAL DESIGN CHANGES, BUT NOT NECESSARILY ALL SITE INSTRUCTIONS. THE UNDERSIGNED DOES NOT WARRANT OR GUARANTEE, NOR ACCEPT ANY RESPONSIBILITY FOR THE ACCURACY OR COMPLETENESS OF THE AS-CONSTRUCTED INFORMATION SUPPLIED BY OTHERS CONTAINED IN THESE DRAWINGS, BUT DOES, BY SEALING AND SIGNING, CERTIFY THAT THE AS CONSTRUCTED INFORMATION, IF ACCURATE AND COMPLETE, PROVIDES AN AS-CONSTRUCTED SYSTEM WHICH SUBSTANTIALLY COMPLIES IN ALL MATERIAL RESPECTS WITH THE ORIGINAL DESIGN INTENT.

LEGEND

City of Prince George

This information has been provided subject to the *Federal Copyright Act* and in accordance with the *Provincial Freedom of Information and Protection of Privacy Act*.

The City of Prince George does not represent or guarantee that the information contained in this document is accurate or reliable, and any person who relies on this information in this document does so at their own risk.

STREET ADDRESS:
4540 HANDLEN ROAD

LEGAL DESCRIPTION:
LOT 1
PLAN 23232
DL 2424
PID: 008-579-539

4	14/06/23	RECORD DRAWING	JPA
3	21/06/21	AS PER CCN No.5 R.1	JPA
2	3/11/20	ISSUED FOR CONSTRUCTION	JPA
1	2/9/20	AS PER ADDENDUM No.2	JPA
0	14/8/20	ISSUED FOR TENDER	JPA
NO.	DATE (D/M/Y)	REVISION	BY

RECORD DRAWING

L&M
ENGINEERING LIMITED

CONSULTANTS PROJECT No.: 1123-67

DRAWN: JPA	
CHECKED: TAF	
ENGINEER: TAF	
DATE: 01/06/2020	
SCALE: FULL 1:300	
SCALE: HALF 1:600	

SCHOOL DISTRICT No.57
KELLY ROAD SECONDARY SCHOOL (SHAS II)
REPLACEMENT PROJECT
PHASE 2
SCHOOL DEMO & SITE UPGRADES
GRADING PLAN - 2 of 3

DRAWING No.
C009

0 9 18
Meters



City of Prince George

This information has been provided
subject to the *Federal Copyright Act*
and in accordance with the *Provincial*
Freedom of Information and Protection
of Privacy Act.

GRADING PLAN - BUS LOOP EXIT

